



High Street | Walsall | WS3 3JT

£800 PCM

Summary

Exceptional Retail Opportunity in a Prime Bloxwich Location - Webbs Estate Agents are thrilled to present this self-contained retail unit in the heart of Bloxwich. Located on the bustling High Street, this prime spot offers excellent visibility and high foot traffic, providing an ideal foundation for a successful and growing business.

Previously operating as a showroom, the space boasts a flexible layout, making it suitable for a variety of uses and adaptable to meet the needs of different business types.

With negotiable lease terms, this is a fantastic opportunity to secure a presence in one of Bloxwich's most prominent high street locations and take your business to the next level.

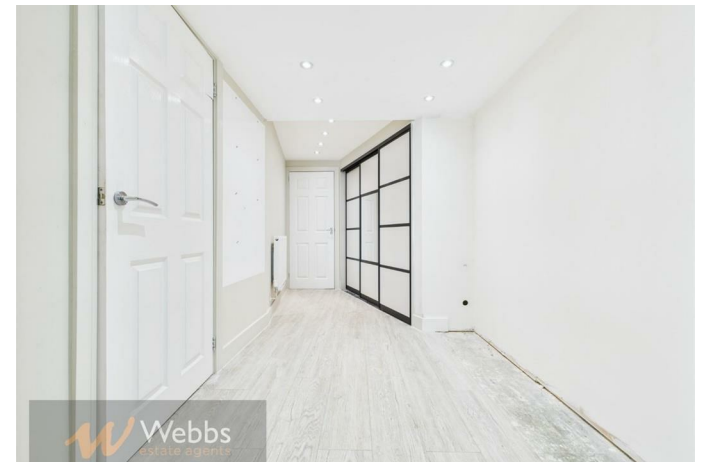
The premises include:

- Spacious main sales area with fantastic retail frontage

Key Features

Rooms and Dimensions







Approximate total area⁽¹⁾
71.1 m²

(1) Excluding balconies and terraces

Calculations reference the RICS IPMS 3C standard. Measurements are approximate and not to scale. This floor plan is intended for illustration only.

GIRAFFE360

Webbs Estate Agents - endeavour to maintain accurate depictions of properties in Virtual Tours, Floor Plans and descriptions, however, these are intended only as a guide and purchasers must satisfy themselves by personal inspection.

Energy Efficiency Rating		Environmental Impact (CO ₂) Rating	
Current	Potential	Current	Potential
<p>Key Average Energy Cost - lower energy costs</p> <p>100-125 kWh/m²/year A</p> <p>125-150 kWh/m²/year B</p> <p>150-175 kWh/m²/year C</p> <p>175-200 kWh/m²/year D</p> <p>200-225 kWh/m²/year E</p> <p>225-250 kWh/m²/year F</p> <p>250-300 kWh/m²/year G</p>		<p>Key Environmental Impact - lower CO₂ emissions</p> <p>100-125 g/m²/year A</p> <p>125-150 g/m²/year B</p> <p>150-175 g/m²/year C</p> <p>175-200 g/m²/year D</p> <p>200-225 g/m²/year E</p> <p>225-250 g/m²/year F</p> <p>250-300 g/m²/year G</p>	
<p>EU Directive 2002/91/EC</p> <p>England & Wales</p>		<p>EU Directive 2002/91/EC</p> <p>England & Wales</p>	